



PDF Tax Sessions

Medical Center: Wednesday, February 18, 6:30—8:00 p.m. Hammer 301

Medical Center: Monday, March 23, 6:30—8:00 p.m. Hammer 301

For all postdocs receiving stipends, these sessions are for you. Come learn all you need to know about filing your taxes from Alan Koslin, H&R Tax Accountant. He is certified as a Master Tax Adviser by H&R Block and is enrolled as a tax preparer with the Internal Revenue Service and has been advising clients on their tax returns for close to 15 years

He will discuss...

- What forms need to be filled out for both the IRS and the state or states for those with income from more than 1 state or those who may live out of NY but have NY income
- What deductions are allowed and how to claim them
- Whether income is considered scholarship, wages or self employment
- How to deal with other income i.e. interest, dividends unemployment etc.
- Filing status and dependents

RSVP: postdocaffairs@columbia.edu

*Please note, the presenter is not affiliated with Columbia University. OPA and Columbia are not responsible for the information disseminated at this session and the presentations is strictly for informational purposes only. **We encourage postdoctoral fellows to consult with a personal accountant or tax advisor** regarding the potential tax consequences from their receipt of stipends since Columbia and the Office of Postdoctoral Affairs cannot provide individual tax advice.*

Spring Orientation Dates

New to Columbia?
Want a refresher on benefits?

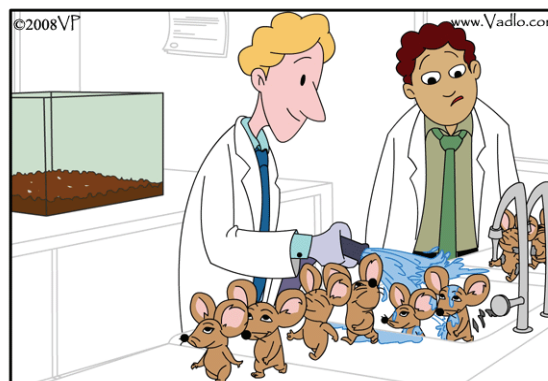
Orientations are from 9:00 - 10:30 am

CUMC: February 17, 2009
PH 17-101

April 14, 2009
PH 17-101

MS: March 17, 2009
Location TBD

May 19, 2009
Location TBD



Preparing them for a publication quality photograph.

**Don't forget to check out the new
OPA website:**

<http://postdocs.columbia.edu>



February 2009 Newsletter

"Careers Outside the Academy: Sociology and Social Science Options"

Friday, February 27, 2009, 4:00pm – 7:00pm

Includes a panel discussion on career options with a graduate degree in sociology/social sciences, followed by a non-academic job-search presentation led by a PhD, and ends with our keynote speaker and renowned economist, *Dr. Jeffrey Sachs*, Director of the Earth Institute and Quetelet Professor of Sustainable Development at Columbia University, as well as Special Advisor to the United Nations Secretary-General. The conference will be followed by a reception, with cocktails and the opportunity to mingle/network with the speakers and attendees.

Seating is limited, and pre-registration is required. To RSVP for this event, please fill out our registration form at: www.nyu.edu/careerdevelopment/students/sociological/registration.php

Survival Skills Workshops - Upcoming Schedule

The Graduate School of Arts and Sciences hosts "Survival Skills Workshops" that are also open up to all Postdocs. All programs are hosted in the Philosophy building on the Morningside Campus (on Amsterdam Avenue between Kent Hall and St. Paul's Chapel) in Room 301.

For details and pre-registration for all events, visit:
http://www.columbia.edu/cu/gsas/calendar/ma_phd_events.html.

Preparing Future Faculty - all lectures start at 4pm

February 18	Untenured Faculty Life, Tenure Track and Adjunct Faculty Talk about the Job Search, First Year on the Job, and Teaching Expectations
March 11	Welcome to the Professoriate, Pedagogy, Power, Politics, and Pitfalls On Your Way to Tenure

Want to know how to find and apply for grants??

FUNDING FOR RESEARCH ACTIVITIES: BASIC ISSUES IN OBTAINING SUPPORT

Those not wishing to formally register are welcome to audit the course.

Spring 2009, M9780, Call No. 97951, Pass/Fail, One Credit
Thursdays, 5pm-7pm, CUMC - Hammer Health Sciences Center, Room 303

Mar 12

Types of support and review processes for research and training activities: Government Agencies

Mar 19

- a) Types of support and review processes for research and training activities: Voluntary Health Organizations, Foundations, Industry, Clinical Trials, and Development
- b) Identifying sources of funding:

Apr 2

Planning & organizing a research proposal (NIH application used as a reference)

Apr 16

Experiences of a peer reviewer and critical review of a sample grant application.

Apr 23

Practice of seeking grant support: Tips from experienced researchers at Columbia
Topics will include: finding sources of support, grant writing, career development, how to make the transition from post-doc/fellowship to first independent research position, K awards, basic science research in a clinical dept, and institutional resources

Apr 30

How to Write: Discussion of proper grammar and composition. Critical review of selected writing pieces.



February 2009 Newsletter

Postdoc Opportunities

Postdoc Fellow - Oncology Division Children's Hospital of Philadelphia

Applicants must have a Ph.D., M.D., M.D./Ph.D. or D.V.M. degree and have demonstrated excellent qualifications from graduate school training in the areas of cell and molecular biology and/or pharmacology and have an interest in leukemia.

Responsibilities will include preclinical in vitro and in vivo advancement of molecularly targeted agents within a funded research program. The experiments incorporate cutting edge pharmacostatistical modeling and simulation approaches into data analysis, experimental design and development of pharmacodynamic activity biomarkers. The position affords a rich training experience utilizing state-of-the-art molecular and proteomic approaches, flow cytometry assays and an animal model applied to new agent advancement.

Please submit cover letter, curriculum vitae and 3 references to:

Carolyn A. Felix, M.D.
Abramson Research Center 902B
3615 Civic Center Boulevard
Philadelphia, PA 19104 - 4318
Phone: 215.590.2831
Fax: 215.590.3770
felix@email.chop.edu

**Please apply directly online at www.chop.edu
under the requisition number 08-16886.**

The Children's Hospital of Philadelphia is an equal opportunity, affirmative action employer. Women and minority candidates are strongly encouraged to apply.

Postdoctoral Professional Development and Enrichment Award 2009

Application Deadline: March 13

The Federation of American Societies for Experimental Biology (FASEB) is pleased to announce the opening of nominations for the 2009 FASEB Postdoctoral Professional Development and Enrichment Award. A total of six (6) individual awards are available to provide resources to support the development and enrichment of leadership skills and training of postdoctoral fellows or new (within one-year) assistant professors.

Each of the six awards will include a \$3,000 unrestricted career development award, a certificate in recognition of the award, plus an additional \$2,500 travel award to support his/her participation in a national scientific meeting.

For complete details:

[http://www.faseb.org/
PostdocProfDevAward/](http://www.faseb.org/PostdocProfDevAward/)

Online applications ONLY.

International Career Fair 2009 - February 20 and February 21 Cathedral Hill Hotel, 1101 Van Ness Avenue - San Francisco, California

An Engineering, Scientific and Business Recruitment Event

On February 20 and 21 international companies will come to San Francisco looking to hire highly educated individuals for their offices in Europe, the Americas and Asia. Earlier this year 1300 candidates attended ICF'08. 40 international companies interviewed candidates for over 900 job openings worldwide.

Why attend?

- * Find job opportunities with international companies in Europe, the Americas and Asia
- * Request on-site interviews with companies that interest you
- * Meet face-to-face with representatives from global companies
- * Attend valuable keynotes and workshops on international careers
- * Network with your peers, experts in the field, and international recruiters

Who should attend?

- * Graduate students (Master's, PhDs or Post-Docs) in engineering, science, business
- * International students and US nationals interested in an international career
- * Professionals with engineering, science and/or business backgrounds

Register and upload your resume at www.icf09.com/jsp/core/PlageHome.jsp



February 2009 Newsletter

Research Commercialization: A Free Webinar Series

This 11-session course is intended for researchers in both academic and for-profit settings. The webinar will cover fundamental and advanced business and legal issues that researchers should understand if they are interested in commercializing their research.

This 11-lecture course is **free**, but registration is **required**. [Register Here!](#)

Lecture 1: Commercialization Methods: **Employment, Licensing, Consulting, Joint Venturing and Startup** [January 14, 1-3pm EST](#)

Lecture 2: The Fundamental Essentials: **Patents** [January 21, 1-3pm EST](#)

Lecture 3: The Fundamental Essentials: **Copyrights, Trademarks, Trade Secrets** [January 28, 1-3pm EST](#)

Lecture 4: The Fundamental Essentials: **Employment Agreements** [February 4, 1-3pm EST](#)

Lecture 5: The Fundamental Essentials: **Tech Transfer and Licensing Agreements** [February 11, 1-3pm EST](#)

Lecture 6: The Fundamental Essentials: **Consulting Agreements** [February 18, 1-3pm EST](#)

Lecture 7: The Advanced Essentials: **Business Entities** [February 25, 1-3pm EST](#)

Lecture 8: The Advanced Essentials: **Shareholder Agreements; Directors and Executives; Term Sheets; Private Placement Memoranda; Stock Purchase Agreements** [March 4, 1-3pm EST](#)

Lecture 9: The Advanced Essentials: **SBIRs/STTRs** [March 11, 1-3pm EST](#)

Lecture 10: The Advanced Essentials: **Corporate Strategic Alliances and Joint Venturing** [March 18, 1-3pm EST](#)

Lecture 11: The Advanced Essentials: **Angel Investors and Venture Capital** [March 25, 1-3pm EST](#)

"Bad to the Bone: Horrors! -- Can Our Genes Help Make Us Act Badly?"

A great opportunity to enjoy an outside the box look at interdisciplinary connections between psychology and many different fields, including history, sociology, politics, and biology.

February 24 7:30 PM
Marymount Manhattan College
221 East 71st Street

February 25 7:15 PM
Church of the Heavenly Rest
2 East 90th Street

CU Scholarly Communication Program

"Open Science: Good for Research, Good for Researchers?"

A panel presented by Columbia University's Scholarly Communication Program will discuss online science communities and the practice of open science, with guest speakers from the Public Library of Science, Drexel University, and OpenWetWare.

The event will take place on Thursday, February 19, 2009, at 3 p.m. in Davis Auditorium in the Shapiro Center on Columbia's Morningside Campus, and is free and open to the public.



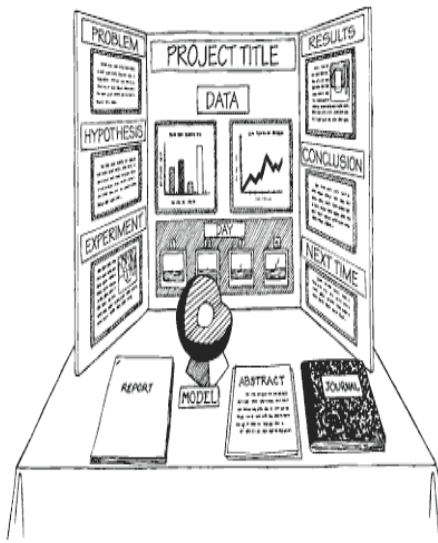
February 2009 Newsletter

Remember your science fair project?

Whether it won or lost, competing in a high school science fair was the first step in attempting answers to big questions, in contributing to the greater scientific understanding, maybe even something that pointed to a career in science, math or engineering, or just fostered a life-long love of discovery.

This spring, help make the New York City Science and Engineering Fair that turning point for some of the brightest high school investigators in the five boroughs. Volunteer to judge for the preliminary or finals rounds of the competition ... serve on the scientific review committee ... become a mentor. It's only a couple hours, and your participation is crucial in making this a rewarding experience. For more information, and to sign up, visit us at <http://collegenow.cuny.edu/sciencefair/judges/>.

New York City Science and Engineering Fair 2009



Today's economic conditions and financial crisis are causing stress and uncertainty in many aspects of our lives. The University recognizes that people in the Columbia community might be facing some difficult challenges as they think about and plan for what seems like an uncertain future.

To assist you and members of your household with the complex situations that you may be facing, Columbia University is pleased to announce that we've contracted with a new vendor—Harris Rothenberg, International (HRI)—to manage our Employee Assistance Program (EAP). Typical issues the EAP will address are family and relationships, drugs and alcohol, work stress, financial strain, emotional difficulties and adult/elder care. Many employers and universities offer similar programs and they are particularly important during difficult times.

The EAP provides confidential counseling, assessment and referral services for you and members of your household. This service, staffed by professional counselors, is available 24 hours/day, 7 days/week, 365 days/year, nationally and internationally, and is effective as of February 2, 2009. There is no charge to you for use of this program. Please click on the following link for additional information:

<http://www.hr.columbia.edu/hr/documents/ben-eap/pdf-ver.pdf>

If you have any questions about the service, please contact HRI by calling 888-673-1153. For any additional information, you may call the HR Benefits Service Center at (212) 851-7000 or email hrbenefits@columbia.edu.

Roommate Opportunity

Sunny, quiet bedroom available to May 2009, longer negotiable.

Co-op apartment located on 123rd and Broadway. Locked intercom lobby, laundry room, 24-hr. security.

Bedroom has closet, dressers and shelving; bed, rug, curtains and furniture are all brand new, never used. Share bathroom with female owner. Light cooking.

Rent/utilities \$750 negotiable, security \$1500. You must have checkable references. Prefer post-doc or similar.

Contact: janeh245@gmail.com - 917-597-9650



February 2009 Newsletter

<h2>OPA Discussion Board</h2>	<h2>Miller Theater @ Columbia</h2>
<p>A new addition to the OPA site is the Columbia University OPA Forum. This was created as an opportunity to promote dialogue among postdocs without OPA being a mediator.</p> <p>Topics include:</p> <ul style="list-style-type: none"> • Jobs and Funding Opportunities • Postdocs Parents Support • Life outside the Lab <p>You must be a Columbia postdoc or an affiliate of a Columbia postdoc to use the OPA Forum. In order to register, please use your Columbia email address to be verified. Registration can take anywhere from 5 - 8 business days. You can access the forum from the OPA website or at this link:</p> <p>http://vesta.cumc.columbia.edu/postdoc/messageboard/</p>	<p><i>Continuing their 20th Anniversary Celebration!</i></p> <p>Located right here on campus at Broadway and 116th Street, Miller starts its Spring 2009 season this Saturday. Sign up for the mailing list today at:</p> <p>http://www.millertheatre.com/MailingList/Default.aspx.</p> <p>As a member of the Columbia University community, you can attend all Miller Theatre-produced events for a discounted price:</p> <p>CU POSTDOCS RECEIVE A 40% DISCOUNT OFF SINGLE-TICKET PRICES! (2 tickets per valid ID)</p> <p>Want deals on tickets, shopping, vacations, movies and more?!</p> <p>Columbia has partnered with Working Advantage to offer exclusive discounts and rates to its employees.</p> <p>Sign up to received daily or weekly emails: http://workingadvantage.com Columbia ID: 99042065</p>

Discount Broadway Tickets

Looking for a fun indoor activity during the winter season?

In conjunction with the School Theater Ticket Program, OPA is happy to offer discounted Theater tickets to postdocs.

To request ticket passes, please send OPA (postdocaffairs@columbia.edu) an email indicating: Name of Show, Office Address, and Number of Tickets. I will send the ticket passes via Intercampus Mail. The coupons must be brought to the box office where they can be exchanged for valid tickets.

Show	Expiration Date	Price Range
Mary Poppins	April 3, 2009	\$30.00 - \$90.00
New York City Ballet	March 1, 2009	\$15.00 - \$55.00
Phantom of the Opera	April 4, 2009	\$26.50 - \$71.50

Questions? Comments? E-mail postdocaffairs@columbia.edu.